

Online Supplementary File 1 to: Dorman, H.E., and L.E. Wallace. 2019. Diversity of nitrogen-fixing symbionts of *Chamaecrista fasciculata* (Partridge Pea) across variable soils. *Southeastern Naturalist* 18(1):147–164.

Note: the content of supplementary files is not subject to proof editing by the journal staff. Thus, the responsibility for the accuracy of all information and correctness of its presentation in this file lies solely with the author(s).

Table S1. Voucher information and GPS coordinates of locations containing *Chamaecrista fasciculata* sampled for this study. Listed are the sampling site code, latitude and longitude coordinates, and voucher specimen. All vouchers are deposited in the Mississippi State University herbarium (MISSA).

Blackbelt Prairie: R40, 33.51080, -88.73812, MISSA033001; R41, 33.61044, -88.74504, MISSA033002; R43, 33.90426, -88.84644, MISSA033003; R69, 33.27292, -88.78952, MISSA033023; Tombigbee Hills: R45, 33.53832, -88.39258, MISSA033004; R46, 33.83404, -88.54369, MISSA033005; R47, 33.98291, -88.50797, MISSA033006; North Central Hills: R49, 33.69892, -89.35080, MISSA033007; R52, 33.92705, -89.60973, MISSA033008; R55, 33.37613, -88.97548, MISSA033009; Loess Hills: R56, 33.10161, -89.96860, MISSA033010; R57, 33.10603, -90.02042, MISSA033011; R60, 33.74908, -90.01002, MISSA033014; Delta: R58, 33.20933, -90.22324, MISSA033012; R59, 33.28662, -90.22324, MISSA033013; R61, 33.47292, -90.13770, MISSA033015; Jackson Prairie: R62, 32.06598, -88.72910, MISSA033016; R63, 31.84590, -88.68717, MISSA033017; R68, 32.25506, -89.40965, MISSA033022; South Central Hills: R64, 31.70537, -89.03673, MISSA033018; R65, 31.70167, -89.04276, MISSA033019; R66, 31.94829, -89.29206, MISSA033020; R67, 32.02475, -89.40509, MISSA033021.

Figure S1: Consensus phylogeny showing placement and support values for all samples collected in this study and sequences taken from GenBank for *truA* (A) and *nifH* (B). Samples collected in this study are labeled by sample site, individual number, and nodule number. Posterior probability is shown on branches by asterisks (* = 0.94-0.94, ** = 0.95-1.0).

B) nifH

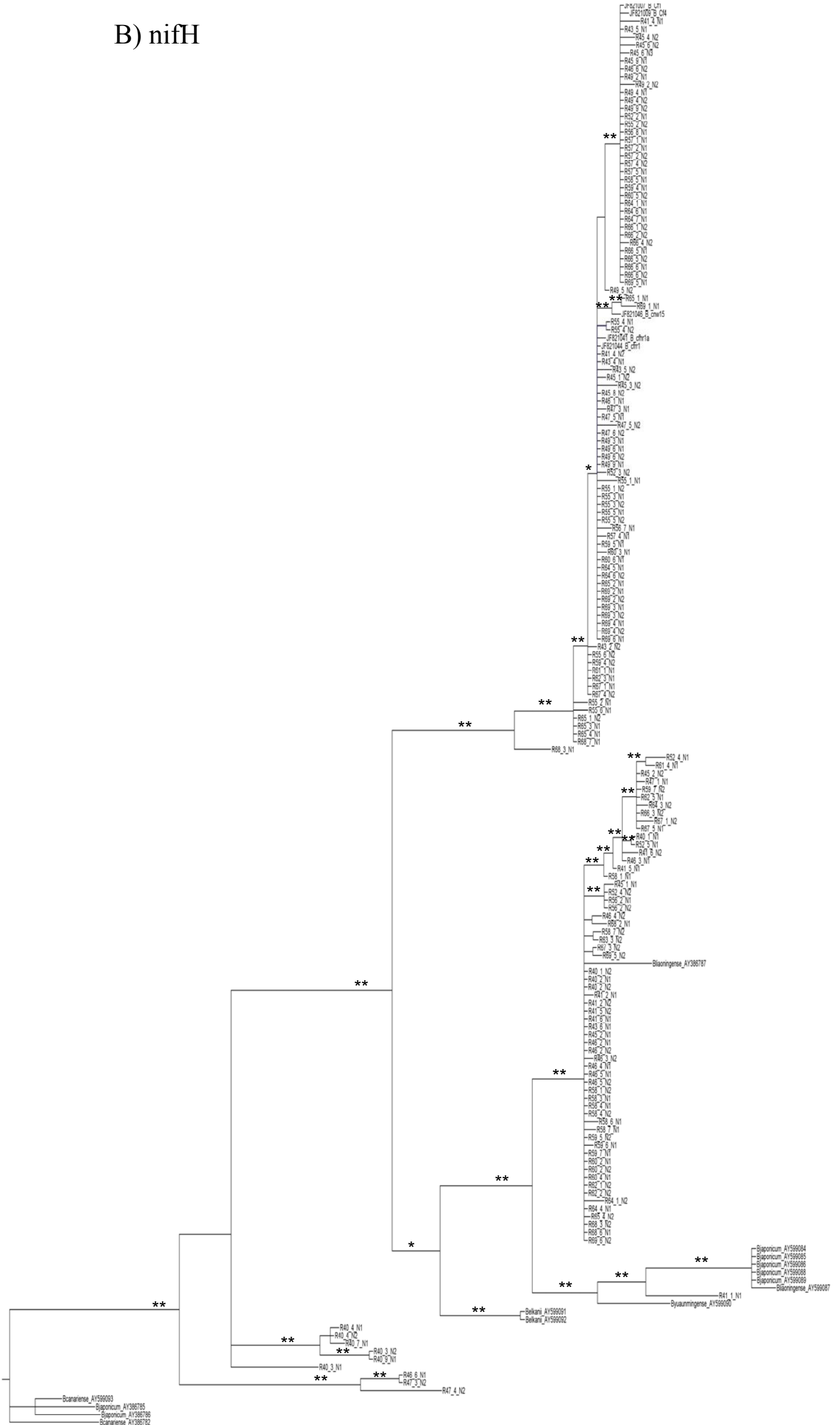


Figure S2: Plot of first two functions from canonical discriminant analysis of soil elements and pH by physiographic region.

