

9-15-2014

# "Archive What I See Now" Bringing Institutional Web Archiving Tools to the Individual Researcher

Michele C. Weigle

*Old Dominion University*, [mweigle@odu.edu](mailto:mweigle@odu.edu)

Michael L. Nelson

*Old Dominion University*, [mnelson@odu.edu](mailto:mnelson@odu.edu)

Liza Potts

Follow this and additional works at: [https://digitalcommons.odu.edu/computerscience\\_presentations](https://digitalcommons.odu.edu/computerscience_presentations)



Part of the [Archival Science Commons](#), and the [Computer Sciences Commons](#)

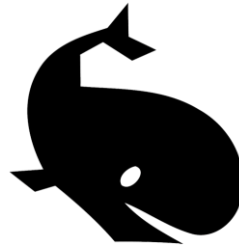
---

## Recommended Citation

Weigle, Michele C.; Nelson, Michael L.; and Potts, Liza, "Archive What I See Now" Bringing Institutional Web Archiving Tools to the Individual Researcher" (2014). *Computer Science Presentations*. 29.

[https://digitalcommons.odu.edu/computerscience\\_presentations/29](https://digitalcommons.odu.edu/computerscience_presentations/29)

This Book is brought to you for free and open access by the Computer Science at ODU Digital Commons. It has been accepted for inclusion in Computer Science Presentations by an authorized administrator of ODU Digital Commons. For more information, please contact [digitalcommons@odu.edu](mailto:digitalcommons@odu.edu).



# "Archive What I See Now"

## Bringing Institutional Web Archiving Tools to the Individual Researcher

**Michele C. Weigle and Michael L. Nelson**

Old Dominion University      {mweigle,mIn}@cs.odu.edu

Web Science and Digital Libraries (WS-DL) Research Group

[ws-dl.cs.odu.edu](http://ws-dl.cs.odu.edu), [bit.ly/odu-dhig-2014](http://bit.ly/odu-dhig-2014)

**Liza Potts**

Michigan State University      [lpotts@msu.edu](mailto:lpotts@msu.edu)

Writing in Digital Environments (WIDE) Research Group

[www2.matrix.msu.edu/wide/](http://www2.matrix.msu.edu/wide/)

Standard web archiving tools are difficult for non IT experts.

"Save Page As" is not suitable for archiving purposes.

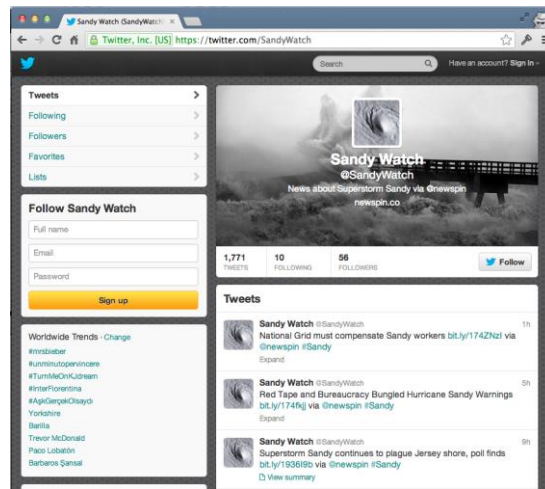
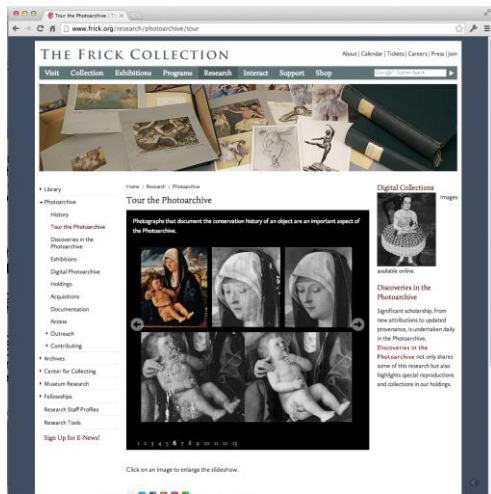
Pages are behind authentication.

Pages change quickly, but current state needs archiving.

*Archive*

*What I See*

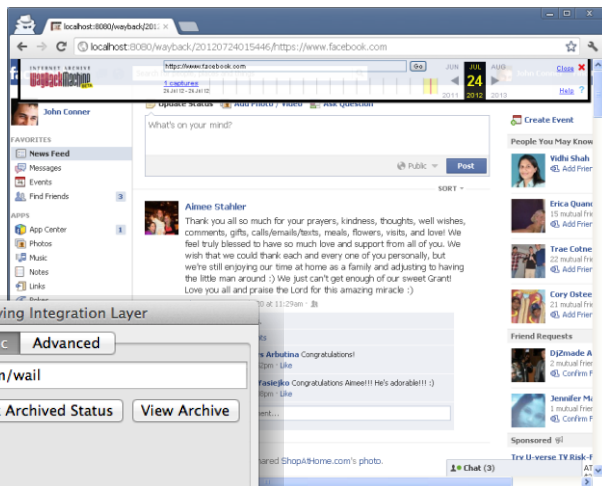
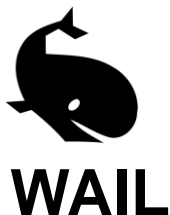
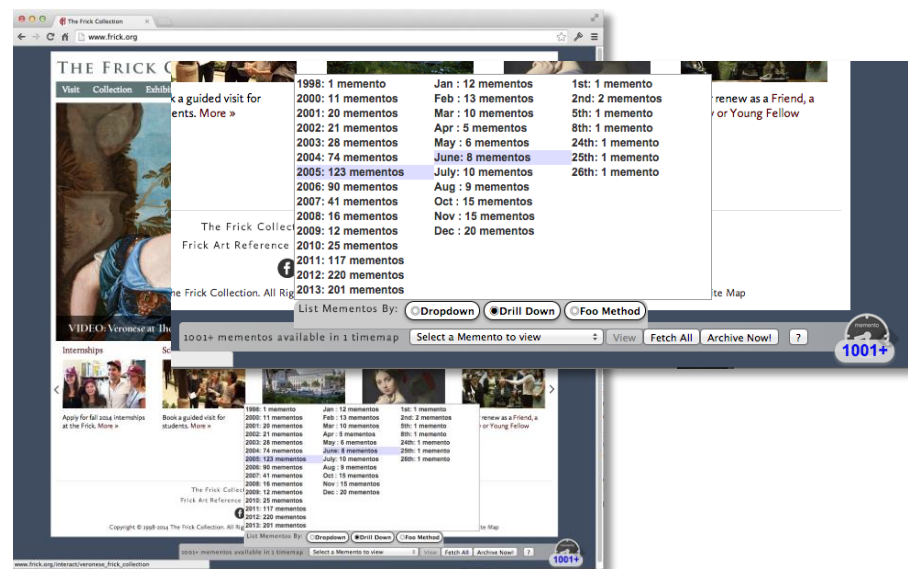
*Now*



# WARCreate



# Mink



[@WebSciDL](http://bit.ly/odu-dhig-2014)